



# PEEL HIGH SCHOOL NEWSLETTER

WEEK 5, TERM 4 2022

## QUICKSMART GRADUATION



Should you need to drop any items off to your child during school hours please drop them into the front office. Students are not permitted to meet you outside school grounds or wait near the front or back gates/fence to collect items from you.

Before School our playgrounds are unsupervised until 8.30am each morning and then only minimal supervision until Roll Call at 9.00 am.

Front Office Hours (Mon-Fri) 8am to 4.00pm

88 GUNNEDAH RD TAMWORTH NSW 2340 T 67657088

E [peel-h.school@det.nsw.edu.au](mailto:peel-h.school@det.nsw.edu.au)

[www.peel-h.schools.nsw.edu.au](http://www.peel-h.schools.nsw.edu.au)

# PRINCIPALS REPORT

The HSC Examinations came to a close on November 4, with our Presiding Officer, Mr Harris, sharing that he believes that the students of 2022 were the most polite he has worked with at Peel High School. Challenge on for the 2023 cohort to ensure that they top this standard. As students receive their early entry to Universities and embark on traineeships, apprenticeships and await their HSC and ATAR results, we wish all our Year 12 2022 students the best as they transition into the next phase of their life. Peel High School staff should be proud of their efforts as they have prepared our students for this moment for the past 6 years. We look forward to welcoming students back in the last week of school to share their successes with the school.

Welcoming and farewelling staff has become a staple in my report recently. It is with great pleasure that we have added to our staff this term, Ms Emily Wood who joins us in TAS, Mr Curtis Wolrige in HSIE and Ms Bec Francis in PDHPE, who we welcome as a returning permanent staff member to PHS. As quickly as we have secured new staff, we have farewelled Jolene Faint as a permanent staff member, but she will continue to deliver lessons to the Stage 6 Aboriginal Language classes from her new role at the Opportunity HUB. In December, we will farewell Ms Michelle Fairall, who has been successful through the merit selection process in gaining a position at the new Bungendore HS, closer to family and home. We have also warmly welcomed 3 practicum students to Peel High School who are learning and sharing their skills with our students as they train to be valued high school teachers of the future.



A return to assemblies and a welcome back to guests at school has seen two significant and successful assemblies this term, where students and staff have been acknowledged for their efforts. The NAIDOC assembly was a wonderful sharing of academic success and culture as staff and students took time to mingle following the assembly. Thank you to our community members that joined us and to the staff who brought the day together. We then went back-to-back with our Leaders Induction and Education Week Awards assembly, with parents and carers in attendance to celebrate our student leaders and successful award winners. Whilst acknowledging success, I must make mention of the success of one of our Senior Executive members, Mrs Wendy Robinson. Mrs Robinson was recently nominated and a successful recipient of a most prestigious award from the 'Australian Council for Educational Leaders' (ACEL), receiving the *William Walker Award for Educational Leadership*. A most deserved award for Mrs Robinson's dedication to education and the NSW Department of Education throughout her career.



It has been a pleasure to welcome Yr 5 and 6 students to PHS as part of our transition to high school program. Thank you to Mr Betts who has put much time and effort into the organisation of these days and the staff who have facilitated a host of interesting lessons for the students to get a 'taste' of the specialties of the high school curriculum.

Congratulations to Chloe and Courtney Mulligan and Isabell Kesby who have been representing PHS in the NSWCHSSA Water polo in Sutherland in Sydney. Much effort to train and compete goes into all sports that students represent our school in and we appreciate the extra efforts of families to assist in facilitating their travel and involvement.

One of our own, Shakayla Spearim will soon feature in a NSW DoE Good News Story about the Year 12 2023 senior jumpers. Word got out that Shakayla has put her artistic skills to work and she will feature in an article that we are sure to share on our Facebook page.

Just in time for summer, our chilled water bubblers have been installed across the school to give our students access to cool water, a reminder to bring a water bottle to fill up in the breaks between classes. We have also seen the completion of our Support Break-Out space, which I know students are very much looking forward to making use of.



I was privileged to attend the *Quicksmart* Graduation in recent days. *Quicksmart* is a program that provides small group tuition to support literacy and numeracy in our junior school. It was wonderful to see so many students reaping the benefits of the program delivered by our specially trained SLSO and LaST staff.

A reminder that Monday December 19 has been gazetted as a Staff Development Day for Curriculum Implementation across the State, as announced by The Minister for Education and Early Learning in October and communicated to the school community earlier this term. There will be no school for students on this day at Peel High School.

Erica Burge

Executive Principal

<https://education.nsw.gov.au/public-schools/connected-communities/connected-communities-strategy>



# QUICKSMART GRADUATION

Quicksmart is an exciting learning program that helps students improve their literacy or numeracy skills. Each program runs for about 40 weeks, with students attending Quicksmart lessons twice a week.

The Quicksmart graduation for 2022 was held for Year 8 and Year 9 students who have successfully finished the program. Students received certificates in recognition of all the hard work they have done over the year to improve their literacy or numeracy.

We are pleased with the progress Quicksmart students have made this year. This would also have not been possible without our wonderful Quicksmart Team.

A special thankyou to our Quicksmart tutors, Carmen Chatfield and Jo Abra, for their commitment to building students' skills and confidence.

Congratulations to all students involved.

- Vicki Saville (Quicksmart Coordinator)
- Donna Burges (Quicksmart Manager)







# **LAST DAY OF TERM 4**

## **FRIDAY 16 DECEMBER 2022**

Dear parents and carers,

As we near the end of the year, I want to thank you for your ongoing support and notify you of a date change for the last day of Term 4 classes.

Students will now finish school on Friday 16 December 2022.

This is due to an additional School Development Day announced for staff across NSW public schools.

School Development Days allow our staff to participate in professional learning that was put on hold due to COVID-19 staffing pressures and plan ahead for 2023 to ensure we meet the needs of our students.

With this change, we ask that you arrange alternative care for your child on Monday 19 December.

If you have any questions or concerns, please contact the school on 02 6765 7088

Kind regards

- Erica Burge (Executive Principal)



# STUDENTS GET WORK INSPIRATIONS

In Week 2 a select group of students had the pleasure of attending a Work Inspirations excursion coordinated through the school and the Smith Family.

Over two days students went to PRD, the Youthie, both Tamworth Regional Council Depots and the Calala Water Treatment Plant. They learned about Real Estate, Warehousing, Mechanics, Fitter/Machinists, Electricians and Chemical Engineering. They were informed of the types of Jobs available, how to get into these roles and health and safety requirements among other valuable skills and information.

All students represented PHS wonderfully. We have had feedback from every single organisation saying how wonderful these students were and that they would be happy to host them again.

Thanks goes to PRD, The Tamworth Regional Council and The Smith Family for this wonderful opportunity.

- Emma Stanley (Careers Advisor)









# BASKETBALL FINALS

Each Wednesday five teams represent Peel High School in basketball at the Sports Dome. The regular season has ended and finals started November 9 2022. The end of regular season rankings for each team are shown below.

<b>Peel Pistons</b>	<b>9/10 Girls</b>	<b>3rd</b>
<b>Peel Bucket Squad</b>	<b>9/10 Boys B Grade</b>	<b>4th</b>
<b>Peel Prodigies</b>	<b>9/10 Boys B Grade</b>	<b>5th</b>
<b>Peel Cavaliers</b>	<b>9/10 Boys C Grade</b>	<b>5th</b>
<b>Peel Boomers</b>	<b>7/8 Boys B Grade</b>	<b>3rd</b>

In 2023 we are planning to add a years 7/8 Girls team and a years 11/12 Boys team. The Winter season takes place in Terms 1 and 2 and the Summer season takes place in Terms 3 and 4. Active Kids Vouchers can be used to cover the costs.

We are also getting new uniforms for the boys. The P&C has kindly agreed to cover the cost of each uniform, so jersey and shorts will cost about \$33 in total.

- Alex Baird (Basketball Coordinator)





# VIRTUAL VISIT

The Year 12 Business Students had an unorthodox, but incredibly informative experience, as they had the opportunity to do a virtual tour of the Yakult factory that's located in Melbourne.

While the students had the opportunity to interact and ask their burning questions to the factory staff, they were actually shown how the product itself was made from start to finish. Not only that, but all of the operation processes that go into the product, including how those unique little bottles are made and how they are packaged in preparation for shipping within Australia and New Zealand.

## *Extended Leave*

**PHS requires an 'Application For Extended Leave - Travel' Form to be completed when a student is going to be absent from school for an extended period of time one Week or more (this leave may be due to a holiday etc..)**

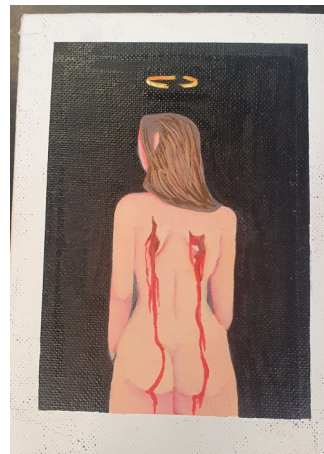
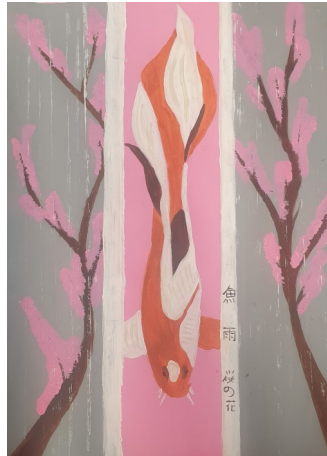
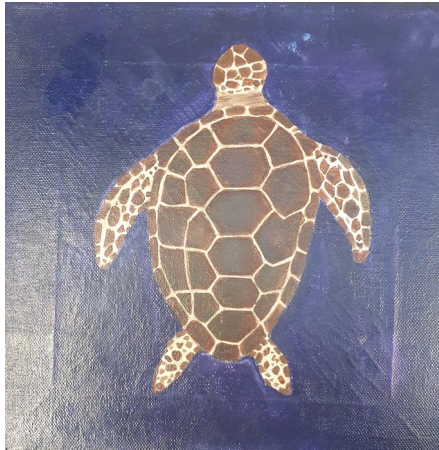
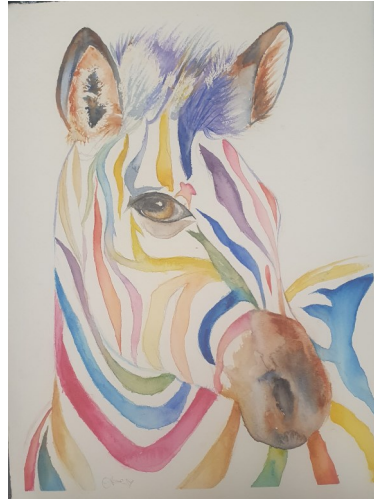
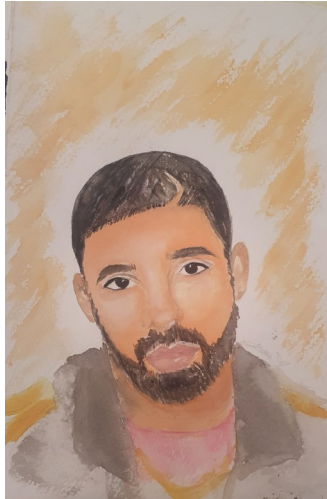
**Any parent/carers wishing to take their child on extended leave can collect a form from the Front Office.**

**Form must be completed by a Parent/Carer and returned for Principal approval, prior to leave commencing.**

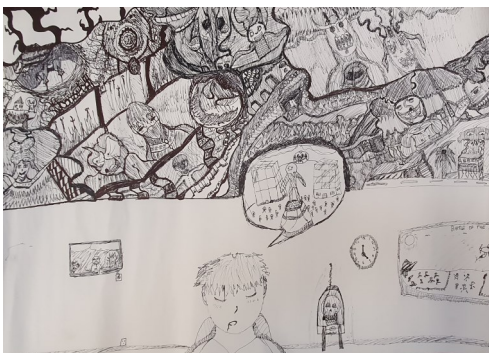
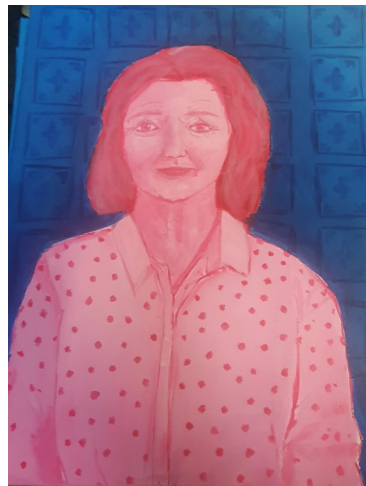
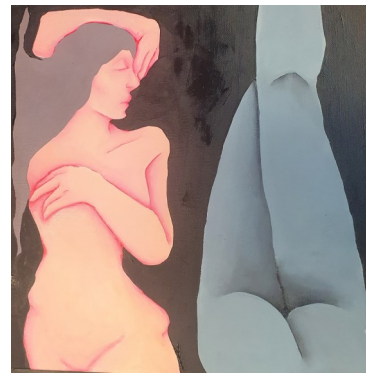
# MARVELOUS MASTERPEICES

Over the past 12 months our HSC Visual Arts students have completed their Bodies of Work. We have a collection of diverse and unique works from our students. Each dealt with a range of issues and themes that held a special connection to them. This has been an amazing experience and students have some fantastic works to show.

- Katherine Roser









# BEEF BONANZA

In Week 2 of Term 4, six students attended the Upper Hunter Beef Bonanza with three steers we had prepared. This is the first time the school had attended in several years. The students really enjoyed the experience and came home with some new knowledge, friendships and experiences despite the horrible weather.

Friday saw an educational day, where students learnt about the beef cattle industry through a carcass breakdown, photography, IVF, reproduction and structure talks.

Saturday was the start of the competition with steer classes and Junior Paraders, while Sunday saw the rest of the Paraders and Junior Judging competitions and we were fortunate enough to come home with ribbons for:

- Two highly commended ribbons in the Middle Weight Steers. These two steers later went on to be placed 6th and 8th in the Hook Section
- Mattiea Jordan (Year 7) placed first in her Paraders heat
- Cameron Russell (Year 8) placed third in his Paraders heat
- Chloe Moss (Year 10) placed fifth in her Paraders heat
- Isabell Kesby (Year 11) placed fifth in her Paraders heat and fourth in Junior Judging
- Zara Kesby (Year 7) placed second in her age group for Junior Judging
- One of our Steers placed fourth in the Heavy Weight Hook Section

- Michelle Fairall








**PEEL HIGH SCHOOL**

# **AFTER-SCHOOL HOMEWORK CENTRE**

*Collect permission notes from the library!*



**WEDNESDAYS 3:20PM - 5PM  
@ THE LIBRARY**

All students are encouraged to attend Homework Centre in the library where they can work on class work, assessments and study with the assistance of their teachers! Snacks and afternoon bus-drop off for local students is provided free of charge.



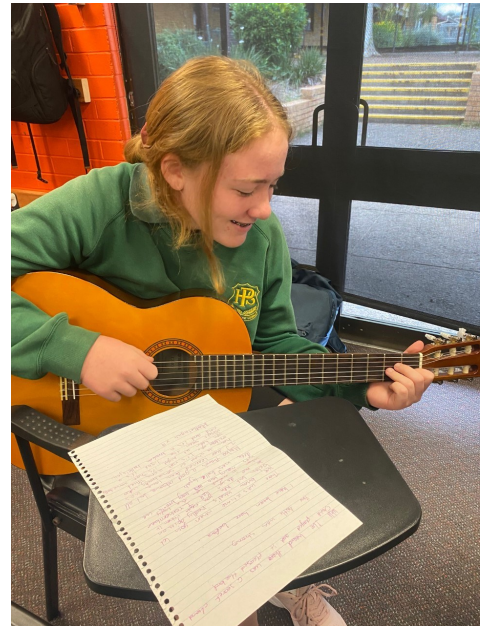
# MUSICAL SEVENS

The Year 7 Music students have been busy working towards their Popular Music Performance Assessment Task. Take a look at all of these budding musicians hard at work!

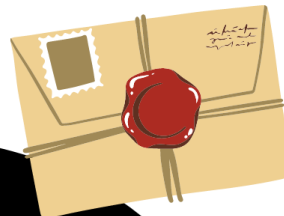
- Nicole Hayman







**Rewarding  
Positive  
Attendance**



**Marramarrama-li  
"Praise"  
Attendance Rewards**

- Students obtain **90% or greater** attendance for **one fortnight**
- Students receive 5 House Points and a Positive Attendance Letter is sent home



# **PEEL HIGH SCHOOL** *Christmas Drive*

Peel High School will be running a Christmas Drive to support TFSS and families in need this Christmas.

Donations of NON perishable Food and NEW Toys can be made under the Christmas Tree in the Front Office from 21st November.

All donations will be presented to TFSS Week 10





# Attendance Roadmap

**100%**

**PERFECT BASE**

At school everyday!

You will achieve personal excellence



**96%**

**GOOD**

Equates to 7 school days off each year



**94%**

**ON THE WAY**

Equates to 11 school days off each year



**90%**

**DANGER ZONE – EDUCATIONALLY AT RISK**

Equates to 1 month off each year



**80%**

**EXTREME IMPACT**

Equates to 2 months off each year



**98%**

**IMPRESSIVE**

Equates to 4 school days off each year



**95%**

**NEARLY THERE**

Equates to 9 school days off each year



**92%**

**NEEDS TO IMPROVE**

Equates to 15 days off each year



**88%**

**SEVERE IMPACT**

Equates to over a month off each year



**below 80%**

**DESTRUCTIVE**

Highly challenging to access any learning

- Calculations based on 196 learning days per year



# Compulsory school attendance

## Information for parents

Education for your child is important and regular attendance at school is essential for your child to achieve their educational best and increase their career and life options. NSW public schools work in partnership with parents to encourage and support regular attendance of children and young people. When your child attends school every day, learning becomes easier and your child will build and maintain friendships with other children.

### What are my Legal responsibilities?

Education in New South Wales is compulsory for all children between the ages of six years and below the minimum school leaving age of 17 years. The Education Act 1990 requires that parents ensure their children of compulsory school age are enrolled at, and regularly attend school, or, are registered with the NSW Education and Standards Authority for home schooling.

Once enrolled, children are required to attend school each day it is open for students.

### The Importance of arriving on time

Arriving at school and class on time:

- Ensures that students do not miss out on important learning activities scheduled early in the day
- Helps students learn the importance of punctuality and routine
- Give students time to greet their friends before class
- Reduces classroom disruption

Lateness is recorded as a partial absence and must be explained by parents.

### What if my child has to be away from school?

On occasion, your child may need to be absent from school. Justified reasons for student absences may include:

- being sick, or having an infectious disease
- having an unavoidable medical appointment
- being required to attend a recognised religious holiday
- exceptional or urgent family circumstance (e.g. attending a funeral)



Following an absence from school you must ensure that within 7 days you provide your child's school with a verbal or written explanation for the absence. However, if the school has not received an explanation from you within 2 days, the school may contact you to discuss the absence.

Principals may decline to accept an explanation that you have provided if they do not believe the absence is in the best interest of your child. In these circumstances your child's absence would be recorded as unjustified. When this happens the principal will discuss their decision with you and the reasons why.

Principals may request medical certificates or other documentation when frequent or long term absences are explained as being due to illness. Principals may also seek parental permission to speak with medical specialists to obtain information to collaboratively develop a health care plan to support your child. If the request is denied, the principal can record the absences as unjustified.

### Travel

Families are encouraged to travel during school holidays. If travel during school term is necessary, discuss this with your child's school principal. An Application for Extended Leave may need to be completed. Absences relating to travel will be marked as leave on the roll and therefore contribute to your child's total absences for the year.

In some circumstances students may be eligible to enrol in distance education for travel periods over 50 school days. This should be discussed with your child's school principal.

### My child won't go to school what should I do?

You should contact the principal as soon as possible to discuss the issue and ask for help. Strategies to help improve attendance may include a referral to the school's learning and support team or linking your child with appropriate support networks. The principal may seek further support from the Home School Liaison Program to develop an Attendance Improvement Plan.

### What might happen if my child continues to have unacceptable absences?

It is important to understand that the Department of Education may be required to take further action where children of compulsory school age have recurring numbers of unexplained or unjustified absences from school.

Some of the following actions may be undertaken:

- **Compulsory Schooling Conferences**

You may be asked, along with your child, to attend a Compulsory Schooling Conference. The conference will help to identify the supports your child may need to have in place so they attend school regularly. The school, parents and agencies will work together to develop an agreed plan (known as Undertakings) to support your child's attendance at school.

- **Application to the Children's Court – Compulsory Schooling Order**

If your child's attendance at school remains unsatisfactory the Department may apply to the Children's Court for a Compulsory Schooling Order. The Children's Court magistrate may order a Compulsory Schooling Conference to be convened.

- **Prosecution in the Local Court**

School and Department staff remain committed to working in partnership with you to address the issues which are preventing your child's full participation at school. In circumstances where a breach of compulsory schooling orders occurs further action may be taken against a parent in the Local Court. The result of court action can be the imposition of a community service order or a fine.

### What age can my child leave school?

All New South Wales students must complete Year 10 or its equivalent. After Year 10, and up until they reach 17 years of age, there are a range of flexible options for students to complete their schooling.

### Working in Partnership

The NSW Department of Education recognises that working collaboratively with students and their families is the best way to support the regular attendance of students at school.

We look forward to working in partnership with you to support your child to fulfil their life opportunities.

# Days missed = years lost


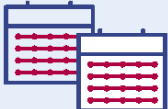
A day here and there doesn't seem like much, but...

When your child misses just...

they miss weeks per year

and years over their school life

**1** day per **fortnight**  
 = **4** weeks  = Over **1** year missed

**1** day per **week**  
 = **8** weeks  = Over **2.5** years missed

## More information

Further Information regarding school attendance can be obtained from the following websites:

### Policy, information and brochures:

Please visit the Department of Education's Policy Library AND The Department's Attendance Matters Website

### The school leaving age:

Please visit the Department of Education's Wellbeing and Learning website

### Do you need an interpreter?

Interpreting services are available on request, including for the hearing impaired. The Telephone Interpreter Service is available 24 hours a day, seven days a week on **131 450**. You will not be charged for this service.





## UPCOMING DATES & EVENTS

November 14	P&C Uniform Shop Open 8:30am-11am	November 29	Year 6 Orientation Day 10am
November 15-17	Northern Schools Cattle Competition 8am	December 5	P&C Uniform Shop Open 8:30am-11am
November 18	Year 12 Formal	December 6	IO Class Shopping Excursion 11:30am
November 21	P&C Uniform Shop Open 8:30am-11am	December 8	Celebration Day
November 21	P&C Meeting 6pm	December 12	P&C Uniform Shop Open 8:30am-11am
November 22	IO Class Shopping Excursion 11:30am		
November 28	P&C Uniform Shop Open 8:30am-11am		
November 28 – December 2	Year 10 Gold Coast Excursion		

## **A REMINDER TO ALL VISITORS, PARENTS & CARERS WHEN VISITING PEEL HIGH SCHOOL**

- If you need to bring items to students at school, they are to be dropped off at the front office.
  - No takeaway food is to be delivered to school for students during the school day.
- If you wish to meet with a staff member, please make an appointment through the front office.
  - No visitors are to access the Peel High School site without signing in at the front office.

Thank you for your cooperation.

- Erica Burge (Executive Principal)

**PHS P&C Uniform Shop** open **EVERY MONDAY** between 8:30am and 11am.

Pop in and see Tracey Towill for all your uniform needs.

**The P&C meet every third Monday of the month at 6pm (except Public Holidays & School Holidays)**

# School Planner 2022



Term four	Week	Monday	Tuesday	Wednesday	Thursday	Friday	Saturday / Sunday
October	<b>1</b>	10	11	12	13	14	15/16
October	<b>2</b>	17	18	19	20	21	22/23
October	<b>3</b>	24	25	26	27	28	29/30
October / November	<b>4</b>	31	1	2	3	4	5/6
November	<b>5</b>	7	8	9	10	11	12/13
November	<b>6</b>	14	15	16	17	18	19/20
November	<b>7</b>	21	22	23	24	25	26/27
November / December	<b>8</b>	28	29	30	1	2	3/4
December	<b>9</b>	5	6	7	8	9	10/11
December	<b>10</b>	12	13	14	15	16	17/18
December	<b>11</b>	19	20	21	22	23	24/25



## Scan me for practical school tips!

To help your child get the most out of their school year and to explore our resources, check out our back to school hub at [education.nsw.gov.au/back-to-school](https://education.nsw.gov.au/back-to-school).