



# PEEL HIGH SCHOOL NEWSLETTER

WEEK 10, TERM 3 2022

## BIG SHOW WINNERS



Should you need to drop any items off to your child during school hours please drop them into the front office. Students are not permitted to meet you outside school grounds or wait near the front or back gates/fence to collect items from you.

Before School our playgrounds are unsupervised until 8.30am each morning and then only minimal supervision until Roll Call at 9.00 am.

Front Office Hours (Mon-Fri) 8am to 4.00pm

88 GUNNEDAH RD TAMWORTH NSW 2340 T 67657088

E [peel-h.school@det.nsw.edu.au](mailto:peel-h.school@det.nsw.edu.au)

[www.peel-h.schools.nsw.edu.au](http://www.peel-h.schools.nsw.edu.au)

# PRINCIPALS REPORT

As the end of term rolls into the holidays we have much to celebrate.

This term we have welcomed a number of new staff to Peel High School. Ms Shrurae Kendall continues with us as a welcoming face at the front desk but is now a permanent member of staff. Mr Alex Baird has been appointed to the Mathematics faculty as a permanent teacher and in Term 4 we will welcome Ms Emily Woods who will join the TAS faculty. We also have a number of new temporary staff working in a range of roles across the school.

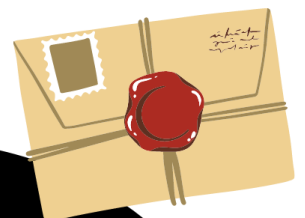
Congratulations to our Yr 12s who had their final classroom lessons this week and now make their final preparations for their HSC exams, the final last stretch of their 13 years of schooling. For some of our students, much of the hard work is complete with major project marking in Drama and TAS practical submissions taking place during Term 3. I wish all our Year 12 students well and the best of luck as they prepare for their examinations that begin on [Wednesday 12th October](#). Thank you to their teachers who will continue to provide extensive support during the school holidays to answer all those last-minute questions.

The Year 12 Graduation Ceremony was held on Friday 23 September, recognising a host of achievements by all students.



The annual Tamworth Show gave the opportunity for students to submit entries in textiles and cooking competitions and for our show team to parade cattle and sheep in their extracurricular activity of choice. It was great to visit the students and share their love of agriculture at the showground on a wet and cold afternoon. Thank you to Mr Bowman, Ms Fairall and Ms Wyse, who is completing her practicum teaching at Peel High School, for their efforts supporting our students from very early to very late in the days over the show weekend.

**Rewarding  
Positive  
Attendance**



## **Marramarrama-li "Praise" Attendance Rewards**

- Students obtain **90% or greater** attendance for **one fortnight**
- Students receive 5 House Points and a Positive Attendance Letter is sent home

The past week has seen our annual leadership camp take place at Lake Keepit. We successfully worked around the unplanned public holiday to ensure that our students were able to enjoy this experience.

Mr Betts has been working closely with our feeder primary schools to provide rich and valuable transition and taster days for our incoming Yrs 5 and 6 students. From the feedback we have received from carers and students, they have had a fabulous time, with a number of days still to come in Term 4.

Congratulations to Molly Frazer, Poppy Walmsley and Vlad Waters who represented Peel High School and the Northwest at the NSWCHSSA Athletics Championships. It is great to see your efforts rewarded in your chosen sport.

This term I spent time with the DV classes as they worked through their Rich Tasks. 'Writing a Book in a Day' was a challenge worth seeing as they scripted their stories and illustrated their books, whilst working in harmony in small groups. Well done to all the students who have shared their creative side in these tasks.

And finally, a mention to the Wednesday Sport 'Garden Club', planting flowers outside my office window to brighten my every day is much appreciated. I look forward to the blooms when they flower.



Erica Burge

Executive Principal

<https://education.nsw.gov.au/public-schools/connected-communities/connected-communities-strategy>

# SWEET SUCCESS

Peel High students have done us proud at the Tamworth Show! As many of our TAS students all entered their cooking and textile items into the show competitions, and many of them came away big winners with many first, second and third place ribbons. Big shout out to Hannah Lewis, who's slice got her the big purple Champion ribbon in the "Junior Cooking High School" section. Not to be outdone, Nicole McCartney also took home a big purple Champion ribbon of her own, becoming the champion in the "Junior Needlework" section.

Another equally worthy mention is Marielle Aquino, who came away with not one, or two, but three first place ribbons for her beautiful entries in cooking and knitting/crocheting.

Special thanks to our wonderful TAS staff and SLSOs who helped our students in getting the student's amazing entries show ready.

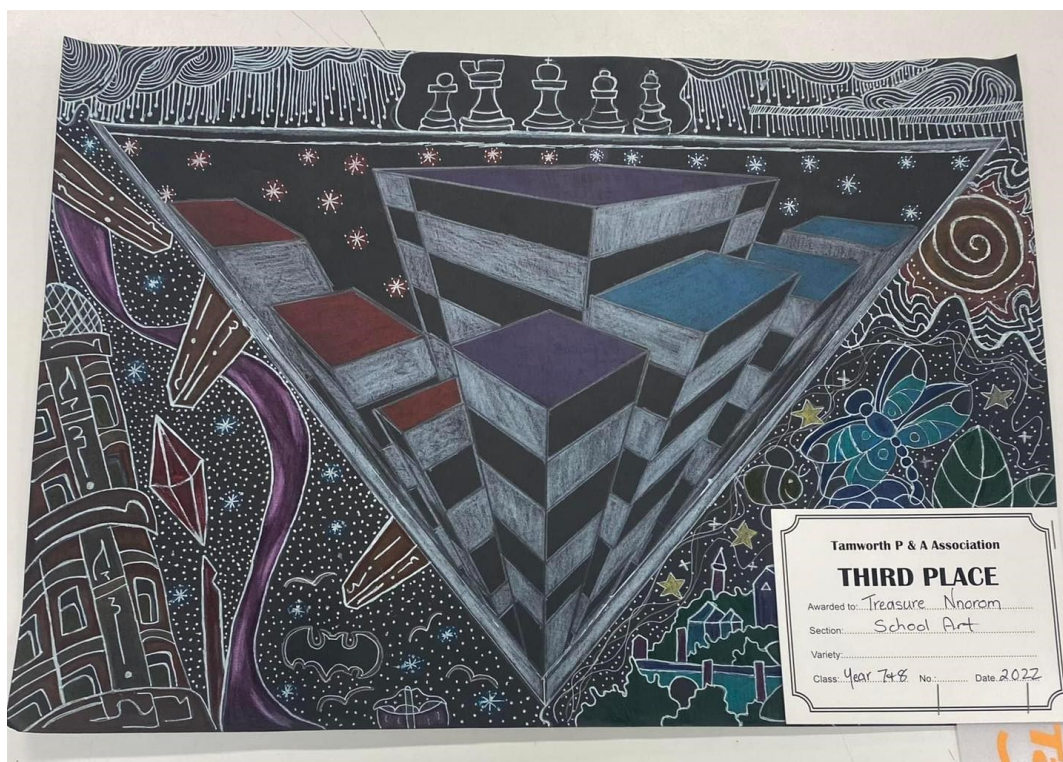
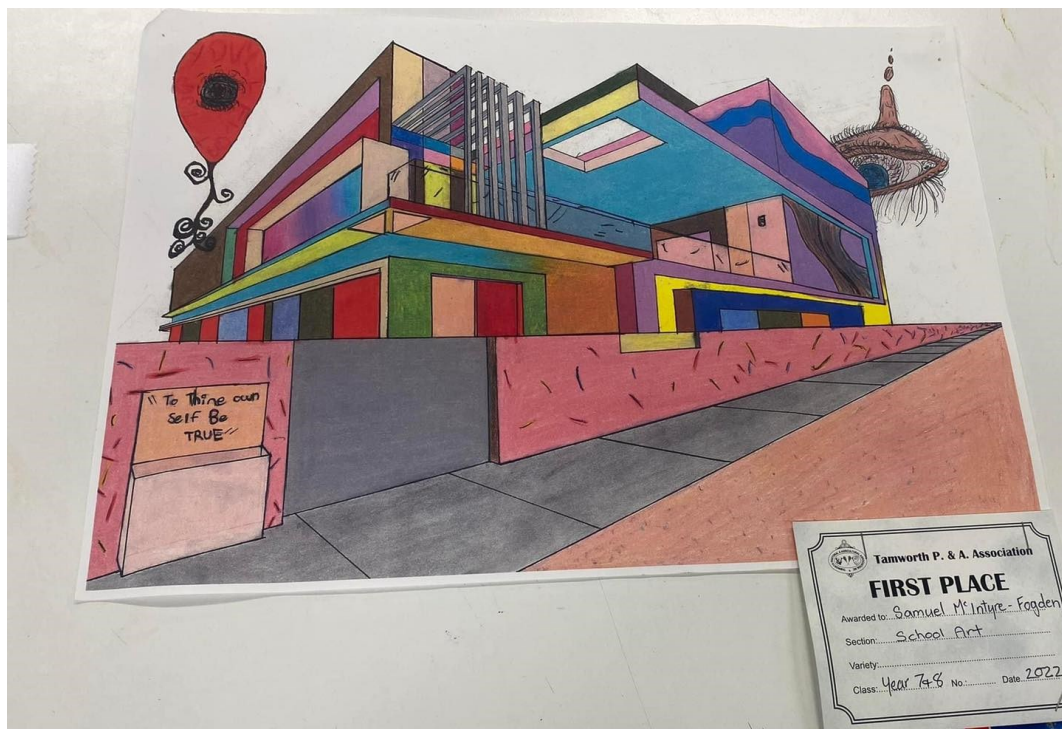




# VISUAL VICTORIES

TAS students weren't the only ones to win ribbons at the Tamworth Show. Visual Arts and Photography students also entered their masterpieces into the show competition, and also came away big winners. Big shout outs go to Hermarni Madden and Samuail McIntyre Fogden for coming first for their stunning art works, as well as Paul Egan, for taking out first place in the "Mobile Phone Junior" Photography section.

A massive congratulations to all of our students who entered into the Tamworth Show competitions!





# BREAKY HUB

STUDENTS CAN STOP IN  
FOR A FREE BREAKY!  
MONDAY, TUESDAY &  
FRIDAY  
8.30AM - 9AM  
IN THE  
TAS BLOCK

# WELL DONE AGRICULTURE

Agriculture have also had some big successes of their own during the year!

The 2022 Dubbo show was held over the last weekend in May. Eight dedicated show team students and parents made the trip to Dubbo, with our seniors Isabell Kesby (11), Alanah Daniels (12) and Angela Robertson (11) leading the team to success.

The students had a very busy and successful four days and exhibited the livestock to an excellent standard. Over the four days students worked hard to prepare and show sheep, as well as show their skills in livestock handling and judging.

Some major awards include:

- Most Successful Novice Exhibitor
- Student Suffolk Stockman Award Presented to Alanah Daniels (yr12)
- Goongunyah Shield won by our senior team Alanah Daniels, Isabell Kesby and Angela Robertson.
- Fifth Merino Sheep Junior Judging – Isabell Kesby (yr11)
- Sixth Merino Sheep Junior Judging – Alanah Daniels
- First Meat Breeds Sheep Junior Judging - Chloe Moss (yr10)

We would like to give a big thank you to Charmaine Kesby, Clayton and Sandra Daniels for transporting the livestock and students to Dubbo.

Peel high school along with 60 other schools from all over the state participated in the Merino Wether Challenge. Schools are all provided with six wethers from the same origin and are required to care for the wethers for the five months prior to the show. In this time schools learn about the industry and work together to meet the requirements of the sheep.

The show is designed as an educational couple of days where there are career and industry talks to encourage students to become involved in the Industry after school. We would like to thank Tamworth High School for showing them.

The wethers were split into two teams of 3 and judged on their evenness. Each group were judged in three different sections, the value of the wool, the value of the carcass and the restocker value. We were successful in winning the following prizes within our region: third in the restocker value, second in the carcass value and second in the combined value.

It was a great experience for the students to learn the differences between sheep bred for meat and sheep bred for wool production. We look forward in participating in this again next year.

On Friday of week 7 approximately 30 students from the show team and general agriculture classes attended Tamworth Show and participated in the Junior Judging Day. Students participated in a range of different judging competitions including Fleece, Beef Cattle, Dairy Cattle and Meat sheep.

We selected a junior team (Years 7-9) and a Senior Team (years 10-12) to represent the school in the oral component of the event. Our junior team (Zara Kesby, Nicholas Rule, Miesha Edwards, Ryan Guy) placed first on their combined scores across the sections whilst our senior team (Alanah Daniels, Isabell Kesby, Chloe Moss and Angela Robertson) were placed second in their section. Other students participated in the individual section and enjoyed learning about the different agricultural industries.

The Saturday saw an early start for the 20 dedicated students to prepare both the sheep and cattle for judging. It was another successful show with sheep winning the following awards, Grand Champion Interbreed Ram, Reserve Champion Interbreed Ewe, Grand Champion Interbreed Group (1 Ram and 2 Ewes), Grand Champion pair of ewes. Congratulations to Angela Robertson on receiving the Sheep Handlers Award.

It was the first cattle show for the season and the students worked tremendously well together and had a steep learning curve on expectations of cattle showing. Two of our students, Isabell Kesby and Cameron Russell were selected to represent the Tamworth region at the 2023 Sydney Royal Easter Show in cattle paraders.

Congratulations to the show team on all of their events for this term. These events would not be possible without the support of parents and the school.



# Year 10 GENERATION Survey

Our Year 10 students have been invited to participate in the first year of a new longitudinal study of young people in Australia. In 2022, the GENERATION study will focus on the activities and aspirations of Year 10 students - what they are doing now and what they think they would like to do in the future with study, training and employment.

Each student who completes this survey will receive an individual summary of their careers interests, while the school will receive a summary report of the plans of Year 10 students as a group. No individual student will be identified in the school report.

There are plans for another 10 years of surveys in this longitudinal study. Students will be asked if they're interested in participating in later years of the study. If students agree to participate in later years, they will be asked to provide their contact details. Please note that it is not a requirement for students to participate in later years, and all questions in the survey are voluntary.

Further information about the study will be provided to all Year 10 families along with a consent form. If you have any questions about the survey, please contact Emma Stanley (Careers Advisor).

All data will be kept strictly confidential and no individual student or school will be identified in published data or reports.

## *Extended Leave*

**PHS requires an 'Application For Extended Leave - Travel' Form to be completed when a student is going to be absent from school for an extended period of time - 1 Week or more (this leave may be due to a holiday etc..)**

**Any parent/carer wishing to take their child on extended leave can collect a form from the Front Office.**

**Form must be completed by a Parent/Carer and returned for Principal approval, prior to leave commencing**



# Attendance Roadmap

**100%**

**PERFECT BASE**

At school everyday!

You will achieve personal excellence



**96%**

**GOOD**

Equates to 7 school days off each year



**94%**

**ON THE WAY**

Equates to 11 school days off each year



**90%**

**DANGER ZONE – EDUCATIONALLY AT RISK**

Equates to 1 month off each year



**80%**

**EXTREME IMPACT**

Equates to 2 months off each year



**98%**

**IMPRESSIVE**

Equates to 4 school days off each year



**95%**

**NEARLY THERE**

Equates to 9 school days off each year



**92%**

**NEEDS TO IMPROVE**

Equates to 15 days off each year



**88%**

**SEVERE IMPACT**

Equates to over a month off each year



**below 80%**

**DESTRUCTIVE**

Highly challenging to access any learning

- Calculations based on 196 learning days per year

# COACHING IN THE COMMUNITY

The Year 10 Coaching in the Community class is nearing completion of the Training Program. The course has included modules such as communication and behaviour management, safe environments, nutrition and well-being as well as the planning and delivery of the Playing for Life Games program. Students will also complete a series of online coaching courses to gain accreditation and certificates to add to their coaching credentials.

Year 10 coaching students have planned a series of 30 minute lessons for presentation at our partner primary schools. They have been presenting the Playing for Life Games program to Year Two students at Westdale Public School each Friday and Years Three and Four students at West Tamworth Public School each Tuesday during this term. The Year 10 students have presented a variety of target, invasion, net and court and striking and fielding games as part of the Playing for Life Games program. Peel High School is very grateful to Mrs Kathie Jackson and her staff from Westdale Public School and to Mr Jonathon Willis and staff from West Tamworth Public School for allowing us to visit and work with their students.

The Year 9 Coaching in the Community class have commenced the General Principles of Coaching course. Successful students will receive a certificate in recognition of this achievement from the NSW Department of Sport and Recreation. Peel High School is very grateful to Mrs Gaylene Ryan from the NSW Department of Sport and Recreation for her ongoing support of the Peel High School Coaching in the Community program.

The Year 9 coaching students have planned a series of 30 minute lessons for presentation at our partner primary schools. They have been presenting the Active Schools Connexion program to Year Two students at both Westdale Public School and West Tamworth Public School this term, commencing in Week Four. The Year Nine students have prepared a series of three progressive sports skill lesson plans for two different sports. These modified sports have included basketball, soccer, touch, cricket and tee ball. The Year Nine class look forward to continuing developing the Stage 1 students and watching them learn a variety of new sporting skills. Thank you to the staff from both Westdale and West Tamworth Public Schools for giving Year Nine the opportunity to work with their students.

Both Year 9 and Year 10 students have contributed in assisting at various Swimming and Athletic Carnivals throughout the year. Congratulations to all the coaching students for their achievements so far as they continue the legacy left by Mrs Trina Parker in her 30+years of Coaching. They portray Peel High School in a very positive manner in the wider community.

The poster features a decorative border with various school supplies. In the top left, there are two orange pencils and a yellow star on a grey tiled background. In the top right, a red spiral notebook and a yellow star are on a light brown tiled background. In the bottom left, a red pencil holder contains several colored pencils (red, yellow, blue, green, black) and a paint palette with orange, blue, and red paint is nearby. In the bottom right, a red pencil holder contains a blue notebook, a black pen, a green pencil, and a blue ruler, with two yellow stars on a grey tiled background.

# Positive House Points

Earn 5 points every fortnight when  
your **ATTENDANCE** is 90% or more!

Earn 1 point for correct uniform or  
improved/consistent effort in class

Accumulate House Points to earn  
canteen vouchers and attend reward  
excursions... and help your house **WIN**  
**THE HOUSE CUP!**

# PEEL WINS DEBATE

Monday September 12 saw the end of the 2022 season for Peel High's debating teams. In recent weeks our Year 9/10 debaters have had wins over Farrer Memorial Agricultural College and Quirindi High, debating topics such as "That religious leaders should not be able to endorse political candidates" and the very topical "That all schools should have a separate stream for academically gifted students". Special shout outs to Cohen Smith and Grace Godlee as first time debaters, and Tamika Bradley, Chloe Leahy (who were roped in to speak and did a fantastic job!) Jenna Stewart, Hannah Walmsley and Jess Wheatley.



Our 7/8 debaters have also had recent success. They hosted Oxley High School at Peel (the first live debate we have hosted in many years) and debated "That school sports should be a compulsory part of a student's ATAR" Lucas Strugnell opened the debate with a maturity well beyond his years, and he was backed up well by Emma Walton as a very able second speaker. Maddi Boyd at 3rd wowed everyone with her ability to speak off the cuff, using only one palm card of notes for an entire speech! Samuail McIntyre-Fogden rounded off the team as team advisor. The team pulled off a final win for the year and we are very excited to see all they will accomplish over the next few years as expert debaters!

Thanks to all our wonderful debaters for another great year!

# YEAR 12 HSC STUDY DAYS

With Year 12 heading into their final exams in a few short weeks, our HSC Standard and Advanced English classes were lucky enough to participate in a HSC study day held at Farrer on the 15/9. The day, organised by the local English Teacher's Association (special shout out to Peel teacher Mel Gunn for her contributions to the day), saw some of the most talented teachers and HSC markers in the state present to students on all areas of the HSC English course. From learning about the film 'Billy Elliot', the play 'The Crucible' to the poetry of Oodgeroo Noonuccal, students refined their knowledge and honed their skills in preparation for their final exams.

The Peel kids showed kindness, respect and responsibility throughout the whole day, proving that Peel kids can do anything! Presenters commented not only on how well behaved our students were but also their diligence in participating in all sessions. Miss Robson and Miss Stewart were incredibly proud to escort this wonderful group of young people for the day.



# NEW COVID-19 GUIDELINES

The COVID-19 guidelines for schools have now been amended.

The most important changes to note are the following:

- Isolation period is now 5 days - provided you have no symptoms on day 5, otherwise the 7 day isolation period continues. A negative RAT result is required before attending school on days 6 and 7 and also must wear a mask on days 6 and 7 for those days in attendance (for all staff and students aged over 12).
- 7 day isolation remains for those in a support setting, assisted transport or overnight excursions.

For further information please visit the official link: <https://education.nsw.gov.au/noticeboard/2022/09/covid-19-self-isolation-requirements-for-school-settings>



USE THE QR CODE TO GO TO  
THE REGISTRATION  
WEBPAGE



**START DATE IS 15/10/2022**

**2022/2023**  
**TAMWORTH**  
**SOFTBALL SEASON**

<b>Senior Fees</b>	<b>\$145</b>	<b>Junior Fees</b>	<b>\$100</b>
Senior fees will cover 18 years and over		Junior fees will cover 13 years to 17 years	
<b>Sub Junior Fees</b>	<b>\$70</b>	<b>Officials</b>	<b>\$45</b>
Sub Junior fees will cover 5 years to 12 years			

**REGISTRATIONS ARE NOW OPEN**

JUNIOR UNIFORMS ARE NOW AVAILABLE FOR SEPARATE PURCHASE  
Tamworth Riverside Complex Carter Street, Tamworth, NSW 2340

**Email: tamworthsoftball@mail.com**

# TCSC SQUAD TRAINING



*Professional Swimming  
training for beginners and  
experienced, in a fun team  
environment.*

**JOIN US**

[tcscinformation@gmail.com](mailto:tcscinformation@gmail.com)

Tamworth city swimming club

## Squad Training

***DEVELOPMENT SQUAD  
A & B - 2 SESSIONS A  
WEEK 3.30-4.30PM***

***JUNIOR SQUAD: 4.30-  
6.30PM MONDAY-FRIDAY***

***CLUB NIGHTS :  
WEDNESDAY 6PM***

# WILLY'S STILL MISSING

A CRY FOR HELP FOR OUR FURY FRIEND

**IF YOU SEE HIM PLEASE DONT TRY TO CHASE OR CATCH,  
HE IS SCARED AND WILL RUN IF YOU APPROACH HIM  
JUST RING OR MESSAGE NUMBERS BELOW**



🐾 **LABRADOODLE**

🐾 **GOLDEN CURLY HAIR**  
● (HAIR WILL HAVE GROWN AN BE DIRTY)

🐾 **LARGE YELLOW TAG**

🐾 **PLEASE CHECK**

- AROUND YOUR HOME
- UNDER HOUSES IN SHED'S
- QUIET PLACES HE COULD HIDE

🐾 **IF SIGHTED**

- PLEASE LEAVE FOOD
- CONTACT NUMBERS BELOW



**CALL OR TEXT WITH ANY INFORMATION  
0429 792 885 OR 0416 103 027**



**NSW Police Force**

30 August 2022

Dear Parents,

### **Gel Blasters in New South Wales**

New South Wales Police would like to highlight an emerging issue which many of you might not be aware of.

Gel Guns or Gel Blasters are lifelike 'toy' guns that closely resemble firearms. They fire gel balls and can be very difficult to differentiate from a real firearm. They are classified as air guns under NSW law and gel balls are classified as ammunition.

It is a crime to possess a Gel Gun in NSW unless you have a firearms licence, even if it was purchased online or legally in another State. It is also a crime to bring a Gel Gun to school. There is potential for injury if a person is struck by a gel pellet ammunition and understandably students and staff may become frightened and distressed if they believe a firearm has been brought into the school.

If a student is found to have a Gel Gun in a school, it will be confiscated, parents and the police will be called. The student may face disciplinary action through the school and could be arrested and charged with possession of a firearm. Parents may also be held liable as per Section 82 of the Firearms Act.

On 1 July 2021, New South Wales Police commenced an ongoing National Firearms Amnesty along with all other states and territories. This allows for any firearms or firearm related articles to be surrendered to a police station without fear of prosecution. If this issue relates to you please ensure you contact your local police station prior to attending and ensure the firearm is in a bag or wrapped in a blanket.

My sincere thanks for your attention to this important issue.

Sincerely,

Gavin Wood APM

Assistant Commissioner

Capability Performance and Youth Command

## PARENT AND STUDENT INFORMATION

# GEL BLASTERS

### What is a Gel Blaster?

A firearm that is typically constructed of plastic and is operated either manually by a piston air pump or automatically by means of a battery-powered motor. These firearms discharge hydrated gel balls by means of a spring and air operated by a trigger mechanism. They cannot discharge the hydrated gel balls by means of an explosive. They often have an outward appearance of various handguns, shotguns and rifles in existence.

### What happens if someone is caught with a gel blaster?

Because these are considered actual firearms in NSW, a person who supplies, acquires or possesses an unregistered firearm could be arrested and charged for possession of a firearm (under *Section 36(1) of the NSW Firearms Act 1996*) which holds a maximum penalty of 5 years for a FIREARM or up to 14 years for a PISTOL or PROHIBITED FIREARM. Possessing 3 or more where at least one is a prohibited firearm carries 20 years.

You could also be facing charges of Possessing a firearm whilst unlicensed (under *Section 7 and 7A of the NSW Firearms Act 1996*).

*Section 82 of the NSW Firearms Act 1996* states that if a parent (or guardian) knowingly allows a person under the age of 18 years to contravene the Act, each parent/guardian is taken to have contravened the same provision.

### What does the law say?

*Section 4(1) of the Firearms Act 1996 NSW* classes Gel Blasters as an air gun, which is considered a FIREARM and hand-gun type Gel Blasters as a PISTOL.

Gel Blasters often substantially duplicate military type self-loading rifles, machine guns and sub-machine guns which would classify them as PROHIBITED FIREARMS (*Item 7, Schedule 1 of the Firearms Act 1996 NSW*).

Hydrated Gel Balls may also be considered AMMUNITION under the act.



### What do I do if I already have a Gel Blaster?

On 1 July 2021, New South Wales commenced an ongoing National Firearms Amnesty along with all other states and territories. This allows for any firearms or firearm related articles to be surrendered to a police station without fear of prosecution. Ensure you contact your local police station prior to attending and ensure the firearm is in a bag or wrapped in a blanket.

# STAYING CONNECTED WHEN EMOTIONS RUN HIGH



## AN INTERVENTION FOR FAMILIES, FRIENDS AND CARERS FREE WORKSHOP

Date: Thursday, 27 October 2022

Time: 10:00am - 3:30pm (9:15am registration)

Venue: West Tamworth League Club - 58 Phillip St, West Tamworth NSW 2340

## EVENT OVERVIEW

This FREE workshop provides carers with additional communication skills to support someone (between 12yrs to 100yrs) who experiences any of the following:

- Has relationship difficulties,
- Demonstrates changing emotions and strong overwhelming feelings that can make communication difficult,
- Sometimes behaves in a way that makes them a danger to themselves or others.

These symptoms can be experienced in those with mental health issues, drug and alcohol dependence, developmental and learning disorders.

## FACILITATORS

**Dr Annemaree Bickerton**

(Child, Adolescent and Family Psychiatrist)

**Toni Garretty**

(Clinical Coordinator Family and Carer Program Illawarra and Shoalhaven Mental Health Service)

## TICKETS & DETAILS

RSVP: <https://events.humanitix.com/staying-connected-when-emotions-run-high-tamworth>

Morning tea, lunch and afternoon tea provided.

For further support or information please contact:

**Diane Dobson**

[diane.dobson@onedoor.org.au](mailto:diane.dobson@onedoor.org.au)



Photo supplied by: Stonemeadow Photography

Dr Annemaree Bickerton (Child, Adolescent and Family Psychiatrist) and Toni Garretty (Clinical Coordinator) Family and Carer Mental Health Program, Hunter New England Local Health District presents:

## “Staying Connected When Emotions Run High”

A Workshop for Professionals working in Government & Non-Government Organisations

**Early bird\* Registration \$99 pp / \$50 for HNELHD Staff**

\*Registrations received after 30/09/2022 @ \$121 pp

**This workshop is free for HNELHD CAMHS Employees**

Morning Tea and Lunch provided

Professionals will receive a workbook and a certificate recording 6.5hrs for CPD

**Venue: West Tamworth League Club- 58 Phillip Street, West Tamworth**  
**Date: Wednesday 26<sup>th</sup> of October 2022**  
**Time: 9:00am – 4:30pm (Registration from 8:30am)**

**Please note, attendees MUST be FULLY VACCINATED for COVID19 or hold a valid exemption certificate to enter the venue**  
This workshop will introduce professionals with frameworks and relationship strategies to become a resource to someone (12yrs – 100yrs) who has changeable and overwhelming emotions; who displays impulsive and destructive behaviour or is diagnosed with marked emotion dysregulation (including personality disorder). This is based on the highly successful intervention for families and carers.

### Learning outcomes:

- ☐ Increased understanding of emotion dysregulation
- ☐ Identify the 'four carer dances' and their role in emotion dysregulation
- ☐ Knowledge of the 'five key relationship strategies' in order to become a helpful resource to someone in distress
- ☐ Understanding relationship triangles – Karpman's Model
- ☐ Introducing the concept of Safety Planning "Like a Fire Drill" to promote safety when distress or risk escalates.

# Registration Form / Tax Invoice Professional Session Only

Hunter New England Local Health District ABN: 63598010203

**Wednesday 26<sup>th</sup> of October 2022**

**West Tamworth League Club – 58 Phillip Street West Tamworth**

**Attendees MUST be FULLY VACCINATED for COVID19 or hold a valid exemption certificate**

Name: \_\_\_\_\_  
Email: \_\_\_\_\_  
Contact Phone No.: \_\_\_\_\_  
Workplace: \_\_\_\_\_  
Special dietary requirements: \_\_\_\_\_

## **Registration Cost:**

☐ \$ 50 HNELHD Staff ☐ \$ 99 Early Bird rego (non-HNELHD staff)  
☐ FREE HNELHD CAMHS Staff\* ☐ \$ 121 Full registration

Price includes Workshop, certificate of attendance, workbook, morning tea and lunch

\*HNELHD employees to apply via this registration form and remember to add on  
My Health Learning>Select 'My Learning'>'My External Learning'>'Add Activity')

## **PAYMENT METHOD**

☐ EFT  
Bank: Westpac  
Location: North Sydney  
Account Name: Hunter New England Local Health District  
BSB: 032-099  
Account Number: 520642  
Reference: 'Last name', 'first initial' 'Staying Connected'  
(e.g.: Smith, S, Staying Connected)

☐ Credit Card Amount: \$ \_\_\_\_\_  
Please debit my: ☐ Visa ☐ Mastercard ☐ Bankcard ☐ AMEX

Card Number: \_\_\_\_\_ / \_\_\_\_\_ / \_\_\_\_\_ / \_\_\_\_\_  
Card Holders Name: \_\_\_\_\_ EXP: \_\_\_\_ / \_\_\_\_  
Card Holders Signature: \_\_\_\_\_

**Registrations close Friday 7<sup>th</sup> of October 2022**  
**All costs are non- refundable after Friday 7th of October 2022**

Please send your registration form via email to  
Eboney Byrnes Administration Manager  
from Child and Adolescent Mental Health Service  
Email: [eboney.byrnes@health.nsw.gov.au](mailto:eboney.byrnes@health.nsw.gov.au)  
Office Use Only 470400-552279 GST-Sales

## UPCOMING DATES & EVENTS

October 10	Making Bullying History 9:08am
October 13	NAIDOC Assembly 12:14pm
October 17	P&C Meeting 6pm
October 19	Year 5 Taster Day 1:36pm
October 20-23	Beef Bonanza - Steer Extravaganza 9am
October 25	GRIP Leadership Conference 8:30am
October 27	Senior Leaders Induction Assembly
November 11	Remembrance Day Assembly

## **VISITORS TO PEEL HIGH SCHOOL - A REMINDER TO PARENTS & CARERS**

**If you need to bring items to students at school, they are to be dropped off at the front office.**

**No takeaway food is to be delivered to school for student during the school day.**

**If you wish to meet with a staff member, please make an appointment through the front office.**

**No visitors are to access the Peel High School site without signing in at the front office.**

**Thank you for your cooperation.**

**- Erica Burge (Executive Principle)**

**PHS P&C Uniform Shop** open **EVERY MONDAY** between 8:30am and 11am.

Pop in and see Tracey Towill for all your uniform needs.

**The P&C meet every third Monday of the month (except Public & School Holidays) at 6pm.**

# School Planner 2022



Term four	Week	Monday	Tuesday	Wednesday	Thursday	Friday	Saturday / Sunday
October	<b>1</b>	10	11	12	13	14	15/16
October	<b>2</b>	17	18	19	20	21	22/23
October	<b>3</b>	24	25	26	27	28	29/30
October / November	<b>4</b>	31	1	2	3	4	5/6
November	<b>5</b>	7	8	9	10	11	12/13
November	<b>6</b>	14	15	16	17	18	19/20
November	<b>7</b>	21	22	23	24	25	26/27
November / December	<b>8</b>	28	29	30	1	2	3/4
December	<b>9</b>	5	6	7	8	9	10/11
December	<b>10</b>	12	13	14	15	16	17/18
December	<b>11</b>	19	20	21	22	23	24/25



## Scan me for practical school tips!

To help your child get the most out of their school year and to explore our resources, check out our back to school hub at [education.nsw.gov.au/back-to-school](https://education.nsw.gov.au/back-to-school).