



# PEEL HIGH SCHOOL NEWSLETTER

WEEK 10, TERM 3 2023

## QUICKSMART GRADUATION



Should you need to drop any items off to your child during school hours please drop them into the front office. Students are not permitted to meet you outside school grounds or wait near the front or back gates/fence to collect items from you.

Before School our playgrounds are unsupervised until 8.30am each morning and then only minimal supervision until school begins at 9.00 am.

88 GUNNEDAH RD TAMWORTH NSW 2340 T 67657088

E [peel-h.school@det.nsw.edu.au](mailto:peel-h.school@det.nsw.edu.au)

[www.peel-h.schools.nsw.edu.au](http://www.peel-h.schools.nsw.edu.au)

# PRINCIPALS REPORT

Ms Burge is currently on leave and consequently I am relieving in her absence.

The end of this term marks the end of formal lessons for our Year 12 students, culminating in the graduation assembly on Friday 22nd September. They have made a significant contribution to Peel HS in their time as students and we wish them the best as they work towards their exams.

Year 12 students have already had some recent outstanding success with a number of students receiving early entry into prestigious universities and attracting many thousands of dollars' worth of scholarship support. A great result based on the hard work and dedication of the students and their teachers.

Additionally, Aaliyah Morley of Year 12 became the 2023 winner of the Aboriginal Student of the Year in the NSW Training award for her traineeship in education support at Hillvue Public School. This is a well-deserved honour and Aaliyah will progress to the National finals hosted in Hobart.

A great highlight of the term has been R U OK Day. The school was buzzing with good vibes in week 9 as staff and students participated in a fantastic day that was about the prevention and early intervention of mental health issues. Community organisations supported the school by providing information to students on a wide range of issues. Students participated in fun activities and indulged in the free sausage sizzle. Staff and students looked resplendent in the R U OK theme colour of yellow. A huge thank you to Janine Way, Shaun Betts and Meghan Leary for organising this event for the school.

Student and staff safety have also been augmented by the significant expansion of the use of CCTV cameras. These devices have provided a greater degree of security both during the school day and after school hours.

A big reminder that phones and other personal electronics devices will be banned from day 1 in Term 4. If students need to bring these devices to school they will need to be locked away for the day. As a result there will be some changes to the bell times for Term 4. These changes create a time in the day called check in and check out. It is during these times that students will hand their phones to staff and pick them up again at the end of the day. More detailed information on the changes can be found on the school Facebook page and in the communications sent to all families. We appreciate your support in what will be a big change for some students and families.

I hope you have a safe and happy holidays and we will see you back at Peel HS in term 4.

Chris Keenan  
Acting Principal

<https://education.nsw.gov.au/public-schools/connected-communities/connected-communities-strategy>



# PEEL HIGH SCHOOL

100%  
AT SCHOOL  
EVERY DAY!  
YOU CAN  
ACHIEVE  
PERSONAL  
EXCELLENCE!

100%  
DHIRRABUU  
"VERY FLASH"

90%  
EQUATES TO 20  
DAYS OFF EACH  
YEAR OR 100  
HOURS OF LOST  
LEARNING TIME

90%  
DHIRRA  
"FLASH"

85%  
NEEDS  
IMPROVEMENT

80%  
DANGER  
ZONE

80%  
EQUATES TO  
40 DAYS OFF  
EACH YEAR OR  
200 HOURS OF  
LOST LEARNING  
TIME

70%  
EQUATES TO  
60 DAYS OFF  
EACH YEAR OR  
300 HOURS OF  
LOST LEARNING  
TIME

75%  
DAMAGING  
IMPACT

70%  
SEVERE  
IMPACT

65%  
CRITICAL  
IMPACT

60%  
EQUATES TO  
80 DAYS OFF  
EACH YEAR OR  
400 HOURS OF  
LOST LEARNING  
TIME

60%  
EXTREME  
IMPACT

BELOW 50%  
HIGHLY  
CHALLENGING  
TO ACCESS  
ANY LEARNING

BELOW  
50%  
DESTRUCTIVE



## YOUR ATTENDANCE MATTERS

# QUICKSMART GRADUATION



Quicksmart is an exciting learning program that helps students improve their literacy or numeracy. Each program runs for about 40 weeks, with students attending QuickSmart lessons twice a week.



In Week 7 of this term, this year's QuickSmart Graduation was held for the Year 8 and 9 students who have finished the program. Students were presented with certificates in recognition of all the hard work they have done to improve their Literacy or Numeracy, by the Acting Principal, Chris Keenan.



Students also had a beautiful Celebration cake and delicious food made by the Hospitality staff.



QuickSmart students have made great improvements this year. This would not have been possible without our QuickSmart team. Vlad and Logan presented our QuickSmart tutors, Carmen Chatfield and Jo Abra, with a gift to thank them for their commitment to building the students' skills and confidence.



# WONDERFUL WORKSHOPS

The Year 8 students recently had a fantastic Language Wellness and Cultural Day at the local Youthie. The day was filled with exciting workshops that allowed students to explore different aspects of wellness and culture.

Students participated in various physical activities and exercises as part of the Fitness workshop. This allowed the kids to get active and promoted positive physical wellbeing.

Another workshop that students enjoyed was yoga. They learned different poses and breathing techniques that promote relaxation and mindfulness.



Students also had the opportunity to make their own hot chocolate bombs. They learned about the art of chocolate-making and got to enjoy their creations afterward.



The Nutrition and Cooking Workshop taught students about the importance of healthy eating and how to prepare nutritious meals. They learned about the different food groups and were able to cook and taste their own healthy dishes.



Students learned about gomeri language in the Language workshop. They had the chance to learn basic phrases and greetings in gomeri language; expanding their knowledge and appreciation of other cultures. Lastly, the art workshop, provided by Krystal Lamb, allowed students to explore their creativity and express themselves through various art forms. They had the opportunity to create their own artwork and learn about different artistic techniques.

We would like to extend a special thank you to Opportunity Hub, Tamworth Local Aboriginal Land Council, Tripple M cakes, and the University of Newcastle Department of Rural Health for their support and contributions to the event.

A huge appreciation goes out to Janine Way for coordinating the day and to our amazing Peel staff who supported the event and made it possible. The Year 8 students had a memorable day filled with wellness and cultural experiences, thanks to the efforts of everyone involved.

## Days missed = years lost

A day here and there doesn't seem like much, but...

When your child misses just...

they miss weeks per year

and years over their school life

**1** day per fortnight



= **4** weeks

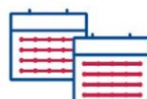


= Over **1** year missed

**1** day per week



= **8** weeks



= Over **2.5** years missed

# ON THE FARM & IN THE KITCHEN

It's a busy period of time for our farmlands, so many things to do and animals to take care of, and luckily our Stage 4 classes are up to the task.

It was all hands on deck one Friday afternoon when Stage 4 made sure all the stocks, water and feeders for the animals were all topped up for the weekend, ensuring our animals are able to eat and drink.



The Stage 4 Girls class learned how to milk sheep to assist in milk production. More importantly, the girls learned how to prevent mastitis in sheep. As one of the baby lambs has an injured jaw, the classes have been doing welfare checks, milking the mum and feeding the sheep. This is done either with a syringe, bottle or from a sterilised saucepan, so the lamb can still get all of the benefits from its mothers milk.





Sharnie and Ayvah used the skills they learned to approach the cattle in a non-threatening way to be able to check their health as well as give the cows plenty of loving pats. It is important to have stress free animals at the Agriculture Farm; the students make sure they are happy and cared for.



The days are gone where Stage 4 students will be making Mac and Cheese out of a box. Students learnt how to make the delicious and popular Mac and Cheese from scratch in the kitchen this term. It received 5 star reviews all round from staff and students.



Year 9 and 10 Food Technology have made a range of food this term including the traditional Australian Meat Pie and Milo cream filled Whoopie pies – an alternate to the famous Meat Pie and a delicious dessert option.



Year 11 Hospitality have been developing skills for the unit 'prepare and serve non-alcoholic beverages.' They have made a range of mocktails this term including mojitos, Italian soda, freshly, appletini and many more. These have been very popular with staff and students and are the perfect refreshment on a busy day.



# COMPETITION CHAMPIONS

Last term all selective classes participated in the Australian History Competition. Congratulations to the following students who achieved outstanding results.

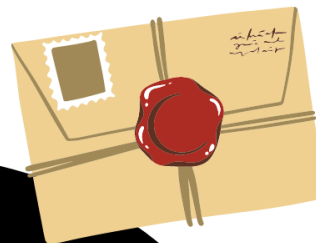
## High Distinction >100

- Riley Weber
- Jeremy Flores
- Menno Wallace

## Distinction 80-90

- Georgia Cowell
- Sidney Turner
- Darcey Bowe
- Henry Cowell
- Emma Walton
- Leah Boreham
- Eli Drummond
- Brody Howard
- Quincey Wallace
- Josie Wilson

Rewarding  
Positive  
Attendance



## Marramarrama-li "Praise" Attendance Rewards

- Students obtain **90% or greater** attendance for **one fortnight**
- Students receive 5 House Points and a Positive Attendance Letter is sent home

# AGRICULTURE & AQUACULTURE

## *PRIZED PIGS*

This term we ran our paddock to plate pig unit. We picked up 2 pigs from local producer Mr Goodfellow. Students monitored the weight gain of the pigs and oversaw the feeding and management of the pigs. Many students enjoyed learning about the pork industry and interacting with the pigs. 15 students travelled with Mr McCabe and the pigs to Bingara for the Northern Schools Pig competition. Students were able to participate in workshops from 'in industry producers' and 'junior judging of pigs', with Bindi Issac coming 2nd and Jordyn Lambert coming 4th in the senior section and Emy Sweeney 4th in the juniors gained place ribbons.



Our pigs were very successful. We not only won top of our class, but also won the champion pig overall! These outstanding results are a reflection of the good breeding of Mr Goodfellow's pigs. The pigs were then taken to Binnaway abattoirs where their carcasses were judged. Where we were able to hold on to the champion position. The Carcasses have been delivered to local 'Cookswell butcher' where they will be cured, cut up and bagged. In week 10 students will be able to cook up eggs from our chickens and bacon from our pigs to sample the full paddock to plate experience. A big thank you to Mr Goodfellow and our farm assistance Michelle for helping with the pigs.

## ***SHEARING SCHOOL***

In week 8, 5 Students returned to Trelawney station with students from Tamworth High School and Manilla Central School to complete a weeklong shearing school with TAFE NSW . They focused on basic crutching operations and wool handling.

This course awards students with 4 industry codes that they can use for future employment. This week was sponsored Educational Pathway Program and Apprenticeship Careers Australia.

A big thankyou goes to Thomas Foods International for supplying the sheep for the students and Aboriginal Lands Council for providing the facilities. We would not be able to run these programs without their generous support for the growing interest that our students have in learning shearing skills. And thankyou to our trainers Ross and Wayne.



## ***RIPARIAN REPAIRING***

Tamworth Regional Landcare Association has just granted Peel High School \$1000 to spend on plants for the rehabilitation of our riparian zones along Tumbumburi creek that runs through the Peel High School farm. This will allow our students to select, plant and monitor the growth of these trees and bushes as we work towards improving the habitats and health of the creek at Peel High School. We are very grateful for the support from Tamworth Regional Landcare Association and look forward to working with them in the future to improve our environment at school.



## ***I FARM***

We are very excited to receive delivery of our new and improved I farm!

The I farm allows us to demonstrate plant production management by having a computerised irrigation system, Perspex glass to observe root growth, a full weather station, worm farm and soil sensors! It will be incorporated into all stages of Agriculture and Technology Mandatory.

All the data will be available via the cloud so students can monitor plant production in real time. We are very excited how this innovative technology will help students better understand plant management.

A massive thankyou to Steve and Kate and the team behind building and developing the I farm for schools! We are one of 56 high schools across the nation that will be receiving an iFarm this year. The iFarm project has been supported by funding from the Australian Government Department of Agriculture, Fisheries and Forestry as part of the Educating Kids about Agriculture.





## **TROUT FARM TOUR**

Our Marines studies class travelled up the hill to hanging rock for an industry tour of Arc-en-ciel trout farm. Students were able to follow the hatching, growing and processing of rainbow trout and sample some of the produce. For many students it was the first time that they had seen an aquaculture production set up.

A big thank you to Russell and the Team for having us up there for the day. It is a beautiful spot and well worth a visit!



PEEL HIGH SCHOOL

## AFTER-SCHOOL SENIOR STUDY SESSIONS

*No sign up needed - just turn up when you can!*



**TUESDAYS 3:20PM - 5PM  
@ THE LIBRARY**

Year 11 and 12 students are encouraged to attend Senior Study Sessions in the library where they can work on class work, assessments and study with the assistance of their teachers! Snacks are provided free of charge.

PEEL HIGH SCHOOL

## AFTER-SCHOOL HOMEWORK CENTRE

*Collect permission notes from the library!*



**WEDNESDAYS 3:20PM - 5PM  
@ THE LIBRARY**

All students are encouraged to attend Homework Centre in the library where they can work on class work, assessments and study with the assistance of their teachers! Snacks and afternoon bus-drop off for local students is provided free of charge.

# Extended Leave

PHS requires an 'Application For Extended Leave - Travel' Form to be completed when a student is going to be absent from school for an extended period of time - 1 Week or more (this leave may be due to a holiday etc..)

Any parent/carer wishing to take their child on extended leave can collect a form from the Front Office.

Form must be completed by a Parent/Carer and returned for Principal approval, prior to leave commencing





# Peel High School

Phone: 6765 7088

PO Box 7005, NEMSC

88 Gunnedah Road

Email: peel-h.school@det.nsw.edu.au

Tamworth NSW 2348

Tamworth NSW 2340

Dear Parent(s) / Carer(s)

White Cross Mobile Dental Care has offered its services to Students across the school and will be coming to Peel High School in term 4. They will be at the school from Monday, October 16 until Friday, October 20. They will be providing comprehensive examinations to check students' teeth and gums. The only work that will be carried out by the mobile dental team for students is an examination of their teeth, dental hygiene cleaning, fluoride use, and fissure sealants if necessary. If your child requires further dental treatment, you will receive a written report so you can book an appointment for your child with his/her local dentist.

The service is free to all students.

If you would like your child to access a free dental Hygiene check, please complete the following forms provided:

- Bulk Billing Patient Consent Form
- Preventative Dental Treatment Request Form
- Child Information Form

**These forms must be completed and returned to the school by Friday, October 13.** Forms that are not returned by this date cannot be processed.

Please note that this dental care service is optional, and it is up to you as the parent or carer to decide if you would like your child to participate. If you choose for your child to receive dental care, it is important that you are aware that this service is provided by an external provider and not by the school or its staff members.

The mobile dental team will take all necessary precautions to ensure the safety and comfort of your child during the examination. Please be assured that strict infection control measures will be in place to maintain a clean and sterile environment.

We strongly encourage you to take advantage of this free dental care service provided by White Cross Mobile Dental Care. Regular dental check-ups are essential for maintaining good oral health. If you have any further questions or require additional information, please do not hesitate to contact Janine Way on 67657088.

Sincerely,

Janine Way

connected communities  
*link up and learn*

## Tamworth Regional Youth Strategy

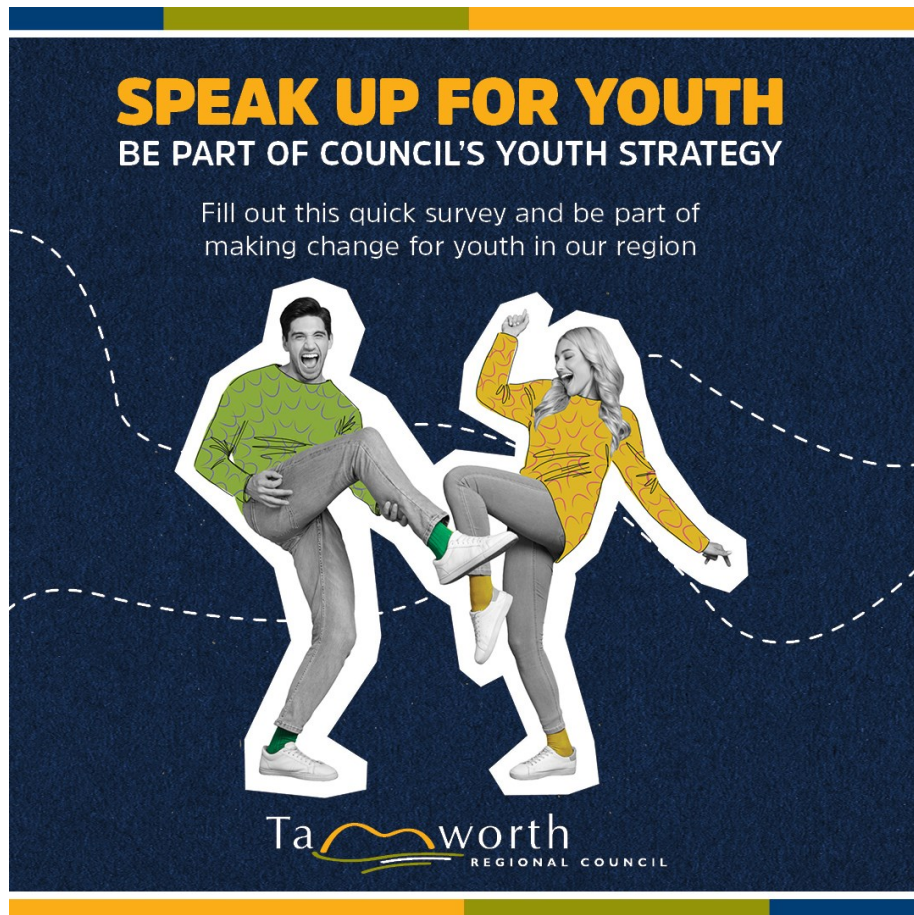
### Newsletter Content

Do you have a child aged 12 and 24? We want your feedback to guide what goes into our Tamworth Regional Youth Strategy!

The Youth Strategy will help guide how Tamworth Regional Council, local services providers, schools, clubs and government departments build a region that supports young people. The strategy will be based on what we hear from our community, and will include actions to support young people.

Visit the following link to complete a short 2-5 minute survey:

<https://haveyoursay.tamworth.nsw.gov.au/documents-public-exhibition/tamworth-regional-youth-strategy>





Tamworth Local  
Aboriginal Education Consultative Group



The TLAECG welcomes you to attend our local meetings. We encourage our mob to participate in the consultative and decision-making process of education and training for our children.

We are members of the North West 2 Regional AECG and the NSW AECG.

If you would like to attend and/or become a member, please feel free to attend at the times and locations below.

If you would like to present at our meetings or would like any further information, please email our secretary on [tlaecg.secretary@gmail.com](mailto:tlaecg.secretary@gmail.com).

Meetings start at 4:15pm

Term 1	Week 3 (4) 15 <sup>th</sup> February	Tamworth HS
	Week 8 22 <sup>nd</sup> March	Oxley HS
Term 2	Week 3 10 <sup>th</sup> May	Tamworth PS
	Week 8 14 June	Bullimbal
Term 3	Week 3 2 <sup>nd</sup> August	Tamworth South PS
	Week 8 6 <sup>th</sup> September	Parry School
Term 4	Week 3 25 <sup>th</sup> October	Hillvue PS
	Week 8 29 <sup>th</sup> November	Peel HS

**UPCOMING DATES & EVENTS**

October 9	P&C Uniform Shop - 8:30am - 9:30am	November 3	Last Day of HSC
October 11	HSC Starts	November 6	Check in Assessment Years 7, 8 & 9
October 16	P&C Uniform Shop - 8:30am - 9:30am	November 6	P&C Uniform Shop - 8:30am - 9:30am
October 17	Senior Leaders Induction Assembly	November 10	Remembrance Day Assembly
October 23	P&C Meeting 6pm	November 10	Year 12 Formal - 5pm
October 23	P&C Uniform Shop - 8:30am - 9:30am		
October 30	P&C Uniform Shop - 8:30am - 9:30am		
October 31	GRIP Leadership Conference		

**A REMINDER TO ALL VISITORS, PARENTS & CARERS WHEN VISITING**

**PEEL HIGH SCHOOL**

- If you need to bring items to students at school, they are to be dropped off at the front office.
  - No takeaway food is to be delivered to school for students during the school day.
- If you wish to meet with a staff member, please make an appointment through the front office.
- No visitors are to access the Peel High School site without signing in at the front office.

Thank you for your cooperation.

- Erica Burge (Executive Principal)

**PHS P&C Uniform Shop open MONDAYS FROM 8:30am - 9:30am**

Pop in and see Sue for all your uniform needs.

**The P&C meet every third Monday of the month at 6pm (except Public Holidays & School Holidays)**

NSW Department of Education

# School Planner 2023



Term four	Week	Monday	Tuesday	Wednesday	Thursday	Friday	Saturday / Sunday
October	<b>1</b>	9	10	11	12	13	14/15
October	<b>2</b>	16	17	18	19	20	21/22
October	<b>3</b>	23	24	25	26	27	28/29
October / November	<b>4</b>	30	31	1	2	3	4/5
November	<b>5</b>	6	7	8	9	10	11/12
November	<b>6</b>	13	14	15	16	17	18/19
November	<b>7</b>	20	21	22	23	24	25/26
November / December	<b>8</b>	27	28	29	30	1	2/3
December	<b>9</b>	4	5	6	7	8	9/10
December	<b>10</b>	11	12	13	14	15	16/17
December	<b>11</b>	18	19	20	21	22	23/24



Scan me for practical school tips!

To help your child get the most out of their school year and to explore our resources, check out our going to school hub at [education.nsw.gov.au/going-to-school](https://education.nsw.gov.au/going-to-school)